

A Cool Comparison: CM-2400



Specifications	CM-2400S (4 Blr)	CM-2400S (PD Blr)	CM-2400VH (4 Blr)	CM-2400VH (PD Blr)
Airlock Size Options	Ø30.5 cm x 30.5 cm Long Ø30.5 cm x 40.6 cm Long		Ø30.5 cm x 40.6 cm Long N/A	
Hose Output	7.6 cm	7.6 cm	7.6 cm	7.6 cm
Airlock Pressure	276 mbar	414 mbar	276 mbar	414 mbar
Blower Type	(4) Centrifugal	(1) 5hp Positive Displacement	(4) Centrifugal	(1) 5hp Positive Displacement
Blower Volume	238 m ³ /hr	280 m ³ /hr	238 m ³ /hr	280 m ³ /hr
Hopper Capacity	0.42 m ³	0.42 m ³	0.52 m ³	0.52 m ³
w/ Extension Option (MAX)	0.74 m ³	0.74 m ³	0.68 m ³	0.68 m ³
Weight	405 kg	542 kg	544 kg	694 kg
LxWxH	158 cm x 59 cm x 130 cm	15 cm x 59 cm x 130 cm	173 cm x 59 cm x 186 cm	173 cm x 59 cm x 186 cm
O/A Height w/ Extension	191cm-208cm	191cm-208cm	N/A	N/A
Loading Height	130cm	130cm	145cm	145cm
w/ Extension Option	132cm-150cm	132cm-150cm	N/A	N/A
Power Requirements	10/10/10 amp Trpl Inputs	10 amp Input	10/10/10 amp Trpl Inputs	10 amp Input
Export (CE)	230 volt/50 Hz	400 volt, 3PH, 50 Hz	230 volt/50 Hz	400 volt, 3PH, 50 Hz
Drive Motor	1.12 kW	1.12 kW	1.12 kW	1.12 kW
Generator Size	10.8 KW	10.8 KW	10.8 KW	10,10.8 KW
Max Hose Length	91m	91m+	91m+	91m+
Warranty	2 year (limited)	2 year (limited)	2 year (limited)	2 year (limited)

Production Rates:	Ø30.5 cm x 30.5 cm	Ø30.5 cm x 40.6 cm
Cellulose	1361 kg/hr	1633 kg/hr
Fiberglass	545 kg/hr	635 kg/hr
Rockwool	817 kg/hr	907 kg/hr

Features:				
Powder Coated Metal	Yes	Yes	Yes	Yes
Check Valve Blower Protection	Yes	Yes	Yes	Yes
Airlock Pressure Relief Tube	Yes	Yes	Yes	Yes
Hourmeter/Voltmeter	Yes	Yes	Yes	Yes
Pressure Gauge	Yes	Yes	Yes	Yes
Re-Lube Bearing	Yes	Yes	Yes	Yes
Modular Control Panel	Yes	Yes	Yes	Yes
Front Panel Reset Overloads	Yes	Yes	Yes	Yes
L.E.D. Plugs/Self Diagnostics	Yes	Yes	Yes	Yes
Heavy Duty Remote Cord	Yes	Yes	Yes	Yes
Scalping Augers	Yes	Yes	Yes	Yes
Turbo Shredder	Yes	Yes	Yes	Yes
Hopper Ext. w/ Loading Tray *	Yes	Yes	Yes	Yes
Wheel Package *	Yes	Yes	Yes	Yes
Lid & Dust Curtain *	Yes	Yes	Yes	Yes
Recycle Fiber Vacuum Hood	No	No	Yes	Yes
Integrated Booster Connection*	No	No	No	No

(*) Denotes an Optional Accessory

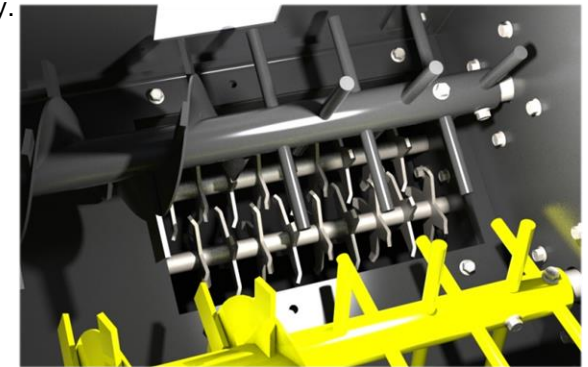
Questions? Call us at +45 54 60 90 06

Description of CM-2400 Features:

- **Robust:** a high capacity and high production machine with low power requirements.
- **Powder Coated Metal:** Powder coating provides a high quality, long lasting finish exhibiting professionalism to your customers.
- **Check Valve Blower Protection:** Protects blowers from back-flow of fibers into the blowers causing damage.
- **Hour Meter:** Records total run hours on the agitator motor airlock for maintenance intervals.
- **Voltmeter:** monitoring of correct voltage to agitator motor to prevent long term damage.
- **Pressure Gauge:** Used to calibrate pressure for dense-packing sidewalls and diagnose condition of airlock seals.
- **Re-Lube Bearings:** heavy duty, triple sealed, 'cast iron' bearings allow re-greasing to provide endless life to bearings and eliminate maintenance.
- **Modular Control Panel:** Quick release panel box with plug-in connections for easy removal (for supplier exchange) and direct power diagnostics to motors.
- **Front Panel Reset Overloads:** Easy access to re-set thermal overload protection to all motors and protected electrical components.
- **L.E.D. Plugs/Self Diagnostics:** Easy diagnostics to confirm power to motors.
- **Heavy Duty #16 Gauge Remote Cord:** Heavy gauge wire conductor with double thick protective jacket provides durability to a component exposed to extreme wear and abuse.
- **Scalping Augers:** Cool Machines proprietary technology providing enhanced fiber conditioning and positive feeding to airlock with no fiber bridging in hopper.
- **Turbo Shredder:** Uses High Speed Blades to provide maximum fiber conditioning and production.
- **Hopper Extension with Loading Tray*:** Increases hopper capacity while also providing a convenient loading tray.
- **Wheel Package*:** Allows convenient transport of machine between vehicles and job-site.
- **Lid & Dust Curtain*:** Reduces the amount of airborne dust around the machine/loading area.
- **Recycle Fiber Vacuum Hood:** Allows for Recycled Fiber to be Vacuumed and re-introduced into the fiber mix during wall spray operations, thus allowing for minimal fiber material waste.



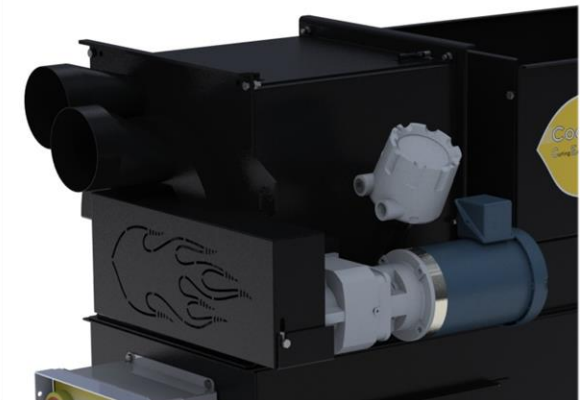
Turbo Shredder



Lid & Dust Curtain*



Scalping Augers



Recycle Vacuum Hood

(*) Denotes an Optional Accessory

Rev. 9/2019